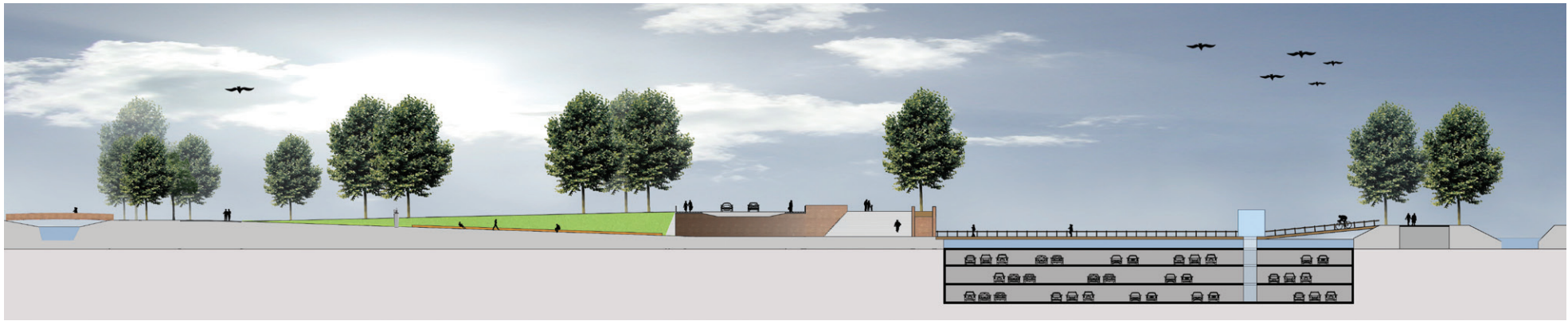






commission: Van Roosmalen van Gessel architects,
studio Leon Thier - Arcadis

The first strategic objective of the image quality plan was the restoration of the rampart and for the re-establishment of the excursion along the wall, under the leafy roof of the impressive trees. As part of the city excursion the bastions are rather special places; their culture-historical importance as part of the defences and in terms of their modern-day purpose as look-out point. In relation to this, in the Zuiderpark the adjoining area at the base of the wall will be cleared of all undesirable obstacles and the BTC de Pettelaer tennis complex will be relocated to a new spot in the park. The inner city canal will be revamped and the parking garage for 1,100 extra inner-city parking places will be situated underneath the canal. The entrance to and exit from the parking garage will be situated on the Baselaar bastion with a direct connection onto Hekellaan. This new purpose for the bastion will be enhanced by introducing a catering pavilion. This will boost the central positioning of the bastion and its special meaning as an intersection in the excursion across the ramparts. The second strategic objective of the image quality plan involves the realisation of an attractive and unambiguous link up from the parking garage through the Casinotuín in the direction of the inner city. From Limietlaan there will be a new connecting line projected over the city canal, under Hekellaan and like a wedged access ramp through the Casinotuín. The former Judastoren (tower) will be given a certain importance in this connecting route; here the underpass will be situated under Hekellaan and via the tower one ascends from the medieval level at the base of the wall to the level of Hekellaan. For the Casinotuín the objective of the image quality plan was mainly directed towards the preservation and enhancement of the impressive, historical stock of trees and the bowl-shaped positioning of the small park along the city walls. Here it is proposed to reposition the works of art which are spread throughout the rampart zone.



section design ▲



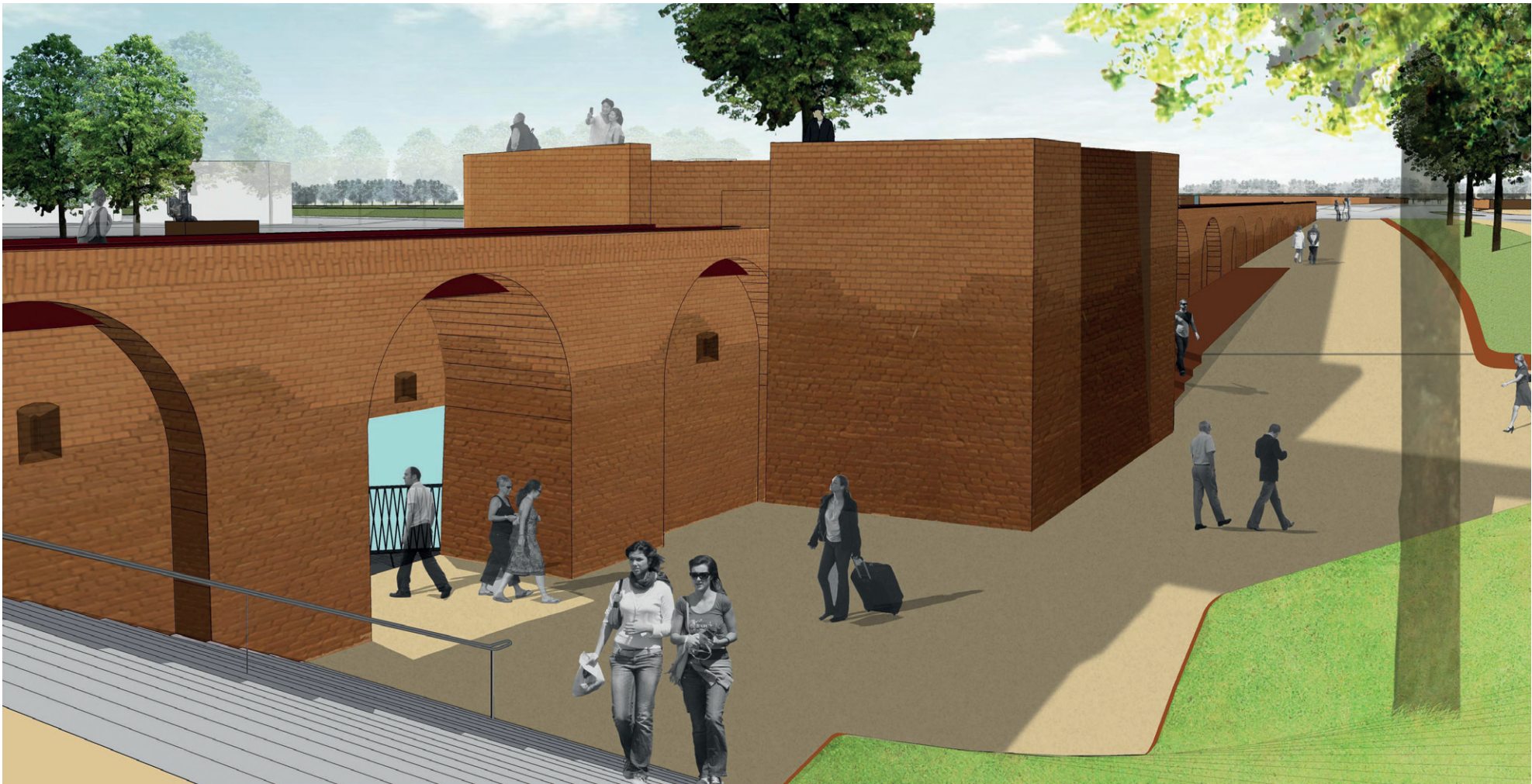
map design ▲



RAMPART ZONE DEN BOSCH



RAMPART ZONE DEN BOSCH



◀ ▲ visualistions design

RAMPART ZONE DEN BOSCH